

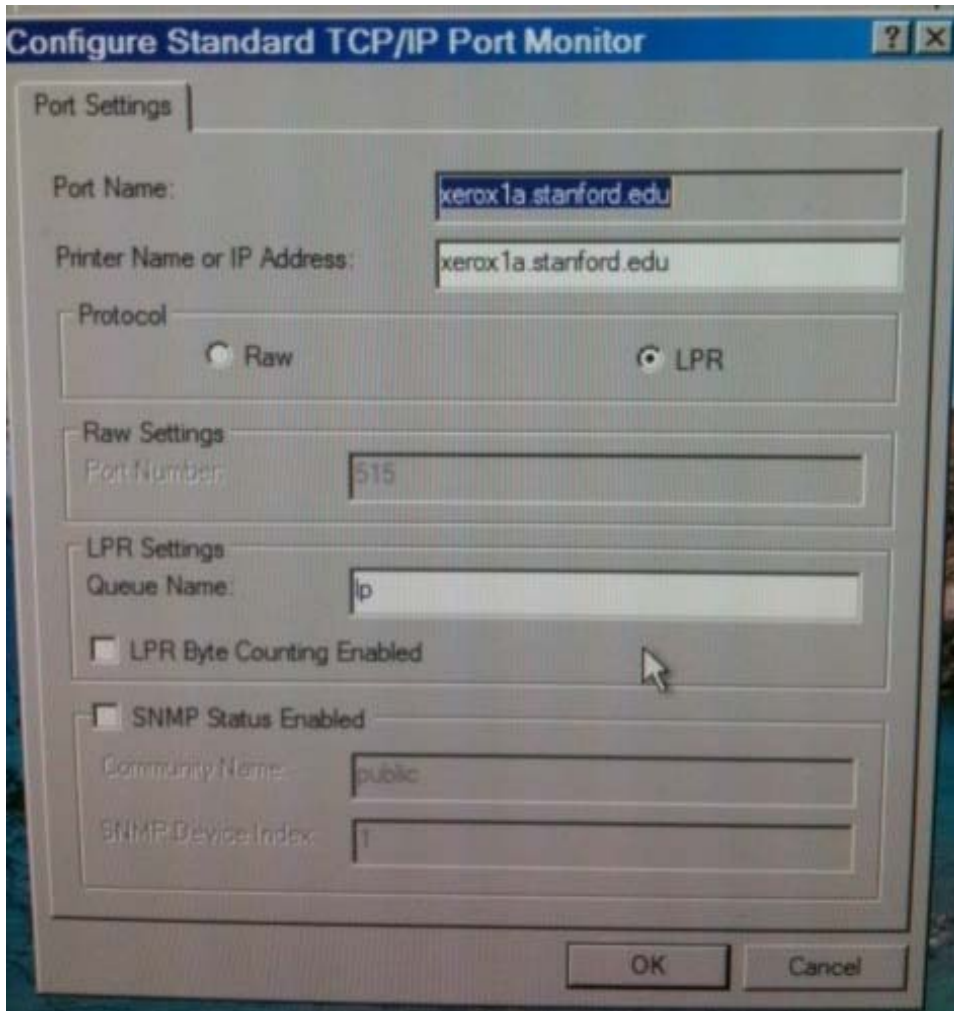
Go to <http://www.support.xerox.com> to download PostScript driver for **WorkCentre 7775**.

Configure Port:

1. Follow previous 3 steps creating TCP/IP port, after adding the printer, in this case, "xerox1a.stanford.edu", open its Properties, go to "Ports" tab, click on "Configure Port"

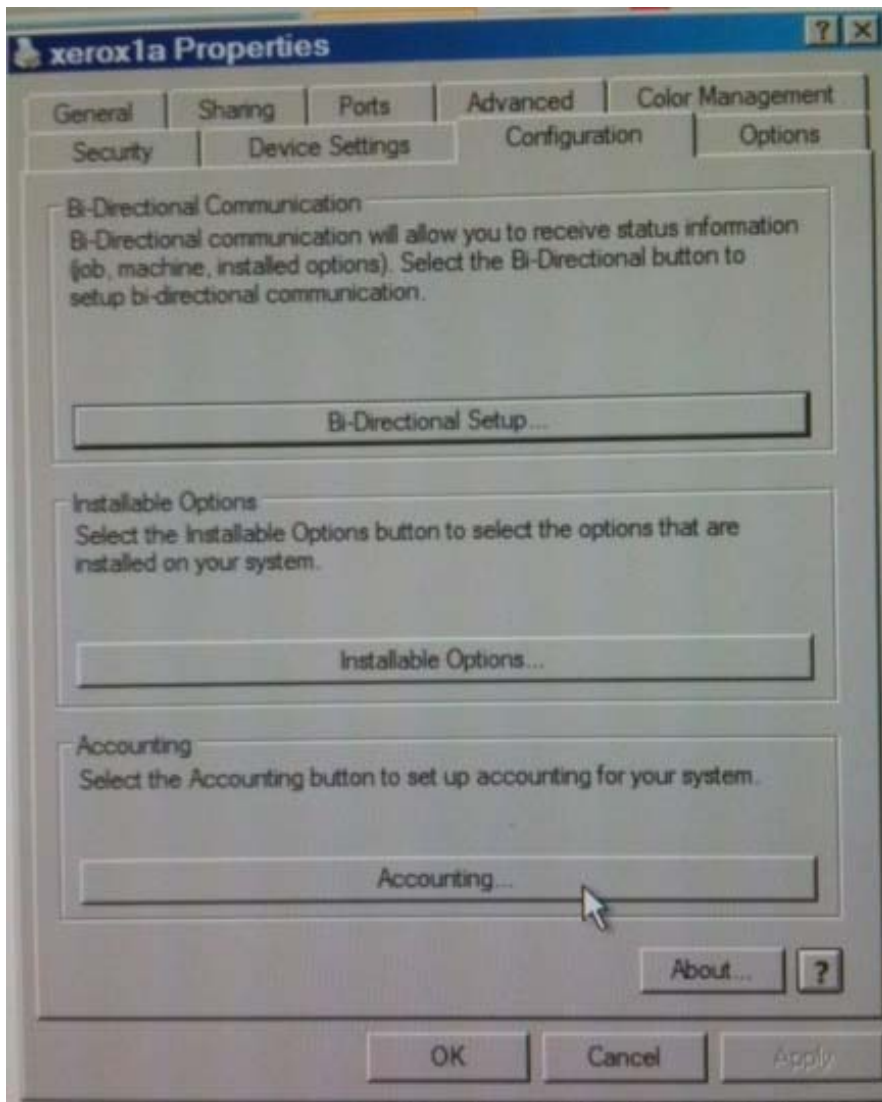


2. Type in Port Name: xerox1a.stanford.edu (or xerox2a/xerox4a, depends on which machine you want to connect to), Protocol is “LPR”, Queue Name is “lp” as picture shown.

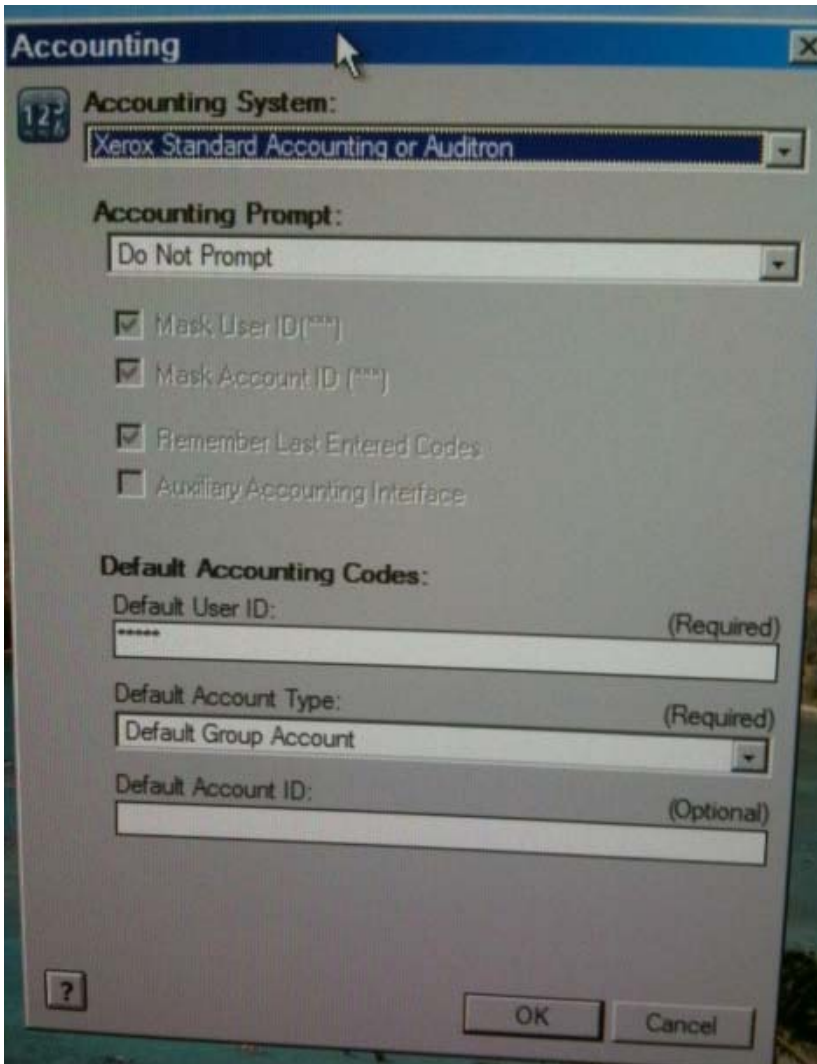


Accounting setup:

Click on "Configuration" tab, select "Accounting" tab



Choose “Xerox Standard Accounting or Auditor” for Account System,
“Do Not Prompt” for Account Prompt,
“Default User ID” is your group copy code as shown below:



Make sure click OK and you are done.